



Newsletter October 2022

News from the Spring Creek Chapter of TU

Visit our website for the most current information about Volunteer Opportunities, Conservation Projects, and more!

[SCCTU Website](#)

Passionate About Spring Creek and Conservation?

The Spring Creek Chapter of Trout Unlimited is actively seeking Board Members and volunteers to join one of the most active chapters in the Nation. Anyone who is passionate about protecting/restoring the Spring Creek Watershed or who would like to get more involved with local conservation, veteran outreach, youth education, or special events should contact: pres@springcreektu.org



Annual Redd Count
Volunteers Needed!



Contact John Himes to Volunteer: j.himesusc@gmail.com

It is once again time for the annual Spring Creek Redd Count! For those who are unaware, a redd count involves teams of volunteers counting and mapping redds (trout nests). The Redd Count provides invaluable data used in assessing the continued health of the trout population in Spring Creek.

The 2022 Redd Count will be taking place on Saturday November 19, 2022 from 10 AM to 3 PM at Spring Creek Park. As always, hot food and coffee, as well as equipment for the volunteers will be provided. Volunteers are encouraged to do their counts on the November 19, 2022.

MORE INFORMATION

October General Meeting
Thursday, October 6th at 7:30pm



Join us for a special presentation by Tim Flagler via Zoom!

What Trout Like to Eat & Flies to Feed Them:

This presentation will include video of aquatic insects, bait fish & crustaceans trout eat to survive and the fly patterns we use to imitate them.

Zoom:

[https://us02web.zoom.us/j/87698680266?
pwd=amRhSGl6ajhIVXBtMi9QYlhJVUpyUT09](https://us02web.zoom.us/j/87698680266?pwd=amRhSGl6ajhIVXBtMi9QYlhJVUpyUT09)

Passcode: 923600

Stream Habitat Restoration Project



Before and after on Spring Creek, Centre County, where the PFBC's Stream Habitat Section is working to restore a section of the popular stream near the Shiloh Road access.

The before photo shows an over-widened section of Spring Creek and vertically eroding stream bank along the access road and biking trail. The erosion has resulted in lost fish habitat and increased sedimentation.

The after photos show the installation of PFBC-designed log-framed deflectors. The deflectors will provide cover habitat for fish and basking areas for reptiles and amphibians, as well as stabilize the eroding stream bank and biking trail. The deflectors also immediately narrow the over-widened channel, which will help establish stream flows that allow natural stream transport of sediment to prevent deposition to the stream bottom. The deflectors were planted with a wildlife pollinator mix and covered in straw mulch.

This project was made possible by cooperation between Pennsylvania Fish and Boat Commission, Spring Creek Chapter Trout Unlimited, PA's Growing Greener Program, Pennsylvania Department of Environmental Protection and ClearWater Conservancy.



Women Anglers

The Women Anglers had a busy 2022! They have been fortunate to use funds from the Jean Brenchley endowment to provide professional instruction for some of their fishing outings. The Women Anglers also hold social events to encourage women to share their “fish stories” and to get to know each other even better. If anyone would like to learn more about the Women Anglers, please contact Diane Brown: dmb490@gmail.com. Click the button below to read the Women Anglers Newsletter!

[Read More Here](#)



Update: State College Area Connector

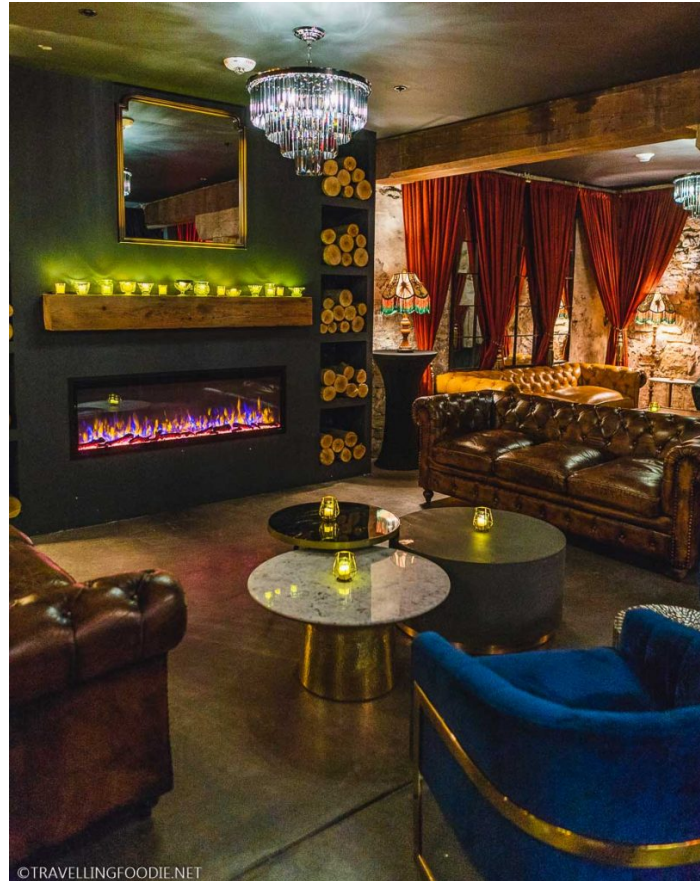


Update on the "State College Connector": plans for PennDOT to make US 322 4-lanes all the way to I-99. There were 9 potential routes previously discussed, they have been narrowed down to three. There is still time for public input on October 19th and 20th.

[More Information](#)

Mayflies & Manhattans

Sunday, October 16th 5:30pm-9pm



This event is open to both men and women! The Spring Creek Chapter of Trout Unlimited and the SCCTU Women Anglers Group, will be hosting an event in the Speakeasy located inside the Gamble Mill. Pre-registration is required and spaces are limited. There will be some special guests in attendance. You don't want to miss this!

[REGISTER HERE](#)

Pennsylvania Council of Trout Unlimited Annual Awards



Congratulations to SCCTU President Jamie SanFilippo. Jamie was awarded the Dr. Jack Beck Outstanding Youth Outreach Award at the Annual Pennsylvania Council of Trout Unlimited's Annual Meeting. For a complete list of award winners, visit: <http://ow.ly/Lmlq50KT7I5>

Veteran Service Program
Meet, Greet, and Fish!



The SCCTU Veteran Service Program is having a meet, greet and fish get-together on Sunday, Oct 16 between 1-5 pm at Fisherman's Paradise in Bellefonte. All equipment and snacks will be provided. Contact Ray for more information: rfaczan@aol.com

The Spring Creek Watershed Atlas

Title: New Zealand Mudsnail in Spring Creek

Author: Robert Morgan, Aquatic Invasive Species Ecologist

Pennsylvania is facing increasing problems with incursions of aquatic invasive species (AIS). One of the most recent invaders is New Zealand Mudsnail (*Potamopyrgus antipodarum*) (NZM), which was discovered in Spring Creek in 2013. This was the first known occurrence of the species on the U.S. Atlantic slope. NZM have the potential to create a negative competitive impact on benthic communities of infested

waterways, thus disrupting the base of the food web upon which higher organisms, such as fish, depend.

[Click HERE to read more!](#)



Find us on Facebook!

Spring Creek Chapter of Trout Unlimited | Website



Spring Creek Chapter of Trout Unlimited | 299 Nimitz Avenue, State College, PA 16801

[Unsubscribe {recipient's email}](#)

[Update Profile](#) | [Constant Contact Data Notice](#)

Sent by pres@springcreektu.org powered by

