



Robert Vierck <rvierck@gmail.com>

August Newsletter- Spring Creek Chapter of TU

Spring Creek Chapter of Trout Unlimited <pres@springcreektu.org>
Reply-To: pres@springcreektu.org
To: rvierck@gmail.com

Tue, Aug 23, 2022 at 7:00 AM



Newsletter August 2022

News from the Spring Creek Chapter of TU

Visit our website for the most current information about Volunteer Opportunities, Conservation Projects, and more!

[SCCTU Website](#)

Board Members

The Spring Creek Chapter of Trout Unlimited is actively seeking Board Members and volunteers to join one of the most active chapters in the Nation. Anyone who is passionate about protecting/restoring the Spring Creek Watershed or who would like to get more involved with local conservation, veteran outreach, youth education, or special events should contact: pres@springcreektu.org



VOTE for the SCCTU

Nominations for PATU Awards Deadline Extended to August 31st

Click [HERE](#) for a full description and criteria of awards:

- Edward Urbas Award for Best PA Chapter
- Best Small Chapter
- Best Chapter Project
- Doc Fritchey Award for Outstanding Coldwater Conservationist TU Member
- Outstanding Coldwater Conservationist-Professional
- Outstanding Volunteer
- Best Chapter Website
- Samuel Slaymaker Award for Best Chapter Newsletter
- Dr. Jack Beck Award for Outstanding Youth Outreach
- Ken Sink Award to Outstanding Service to PATU
- Inky Moore Award for Outstanding Service to State Council
- Diversity Award

Fill out a [NOMINATION FORM!](#) Awards will be handed out during the [PATU Annual Meeting](#) in on September 17th.

Y Trout Release & Duck Derby

Volunteers from the SCCTU Board and Women Anglers Group helped local children release Rainbow Trout from the "Y Trout" tank and wrangled almost 500 ducks as they crossed the finish line on August 6th. Check out some underwater [footage!](#)



Annual Winery Event

Our Annual Winery Event will be on Thursday, September 8th, 5:30pm-8:30pm, at Mount Nittany Vineyard & Winery. **Registration is required**. We will be serving a buffet style meal catered by Harrison's. A \$20 cash donation per person is appreciated, but not required. Support local conservation by participating in our 50/50, basket raffles, and by purchasing Spring Creek Peach wine. Contact Fran for more information: fstevenson47@comcast.net

DONATE

REGISTER



Women Anglers

16 Women Anglers had a lot of fun fishing and eating pizza in September! After fishing, they went to fellow angler, Nancy Noll's B&B, The Queen, for pizza. Each of them prepared their own pizza creation. Her husband, Curt Miller, did the cooking! If you would like to attend or to learn more about the Women Anglers, please contact Diane Brown at dmb490@gmail.com.



Youth Education Committee



Our Youth Education Committee provided a presentation to over 20 youth under the age of 10, at the Schlow Memorial Library on July 27. Judi Sittler used the Enviroscape to demonstrate what happens to all the water loaded with pollutants when it rains. Jamie SanFilippo helped the kids find some aquatic insects that were hiding under rocks and plant material. It was fun and educational for the youth as well as the parents.

Contact Judi to become a volunteer: jlsittler@comcast.net

Mayflies & Manhattans

Sunday, October 16th 5pm-10pm



Save the Date!! The Spring Creek Chapter of Trout Unlimited's, Women Anglers Group, will be hosting an event in the [Speakeasy](#) located inside the [Gamble Mill](#). There will be a cost, one drink is included, and all proceeds benefit the SCCTU. **Space is limited and registration will be required.** More details to come!

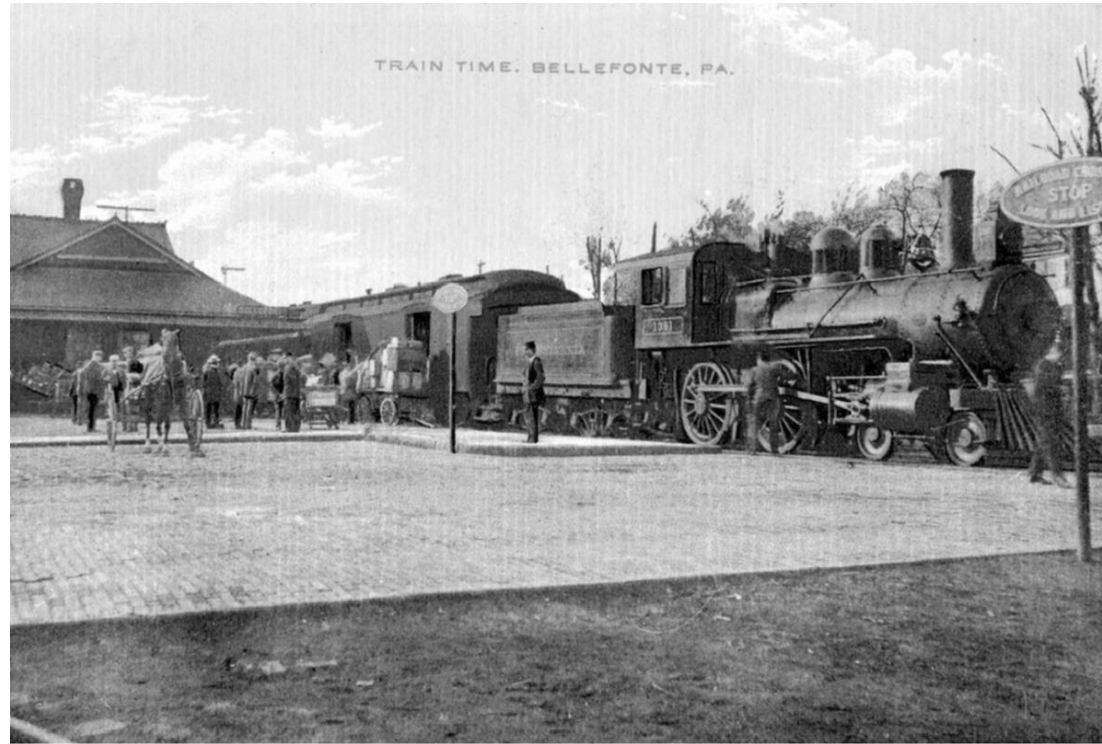
The Spring Creek Watershed Atlas

Title: Railroads of the Spring Creek Watershed

Author: Michael Bezilla

“Bellefonte is now a great railroad center, and trains are arriving and departing continually, connections being made in all directions.” So proclaimed the Democratic Watchman, one of the community’s weekly papers, in its September 9, 1885, edition. The Watchman noted that two trains running the length of the Bald Eagle Valley in each direction made daily stops in Bellefonte, as did two trains that made round trips from Lewisburg via Penns Valley and Lemont. A train originating at Snow Shoe, on the Allegheny Plateau, made a daily run down the mountain to Bellefonte. All of these were passenger and express trains. Add perhaps a dozen freight trains to the mix, and the Watchman’s statement was no exaggeration.

[Click HERE to read more!](#)



Find us on Facebook!

Spring Creek Chapter of Trout Unlimited | Website



Spring Creek Chapter of Trout Unlimited | [299 Nimitz Avenue, State College, PA 16801](#)

[Unsubscribe rvierck@gmail.com](#)

[Update Profile](#) | [Constant Contact Data Notice](#)

Sent by [pres@springcreektu.org](#) powered by



Try email marketing for free today!